



## About MEGMEET

Shenzhen Megmeet Electrical Co., Ltd.(Stock Code:002851) is a one-stop solution provider for the R&D, production, sales and services of hardware and software in electrical automation field, highlighting in power electronics and automatic control technology. Company's main business covers six parts: power supply products, industrial automation, new energy vehicle& rail transit, intelligent equipment, smart appliance electronic control and precision connection.

Our company has established a strong platform of R&D, manufacturing, marketing and service with more than 2800 R&D personnel and a total of more than 7800 employees. We have established R&D centers in Shenzhen City, Changsha City, Xi'an City, Wuhan City, Zhuzhou City, Hangzhou City, Taizhou City and Chengdu City; overseas research institutes in the United States, Germany, and Sweden; manufacturing centers in Zhuzhou City, Dongguan City, Heyuan City, Taizhou City, and Yiwu City; overseas factories in Thailand and India; overseas marketing station in the United States, Japan, Korea, Southeast Asia, India, Germany, Poland, Romania, Turkey, Sweden to provide quality service resources.

MEGMEET is committed to helping people achieve a more efficient use of electricity, creating a cleaner living environment, continuously improving production efficiency and creating a better life for human beings. Our company aspires to become a global first-class product and solution provider in the field of electrical control and energy saving.

## CONTENT

-----	P01
-----	P07
-----	P08
-----	P09
-----	P16

# PLC

# 4

A New Generation of High-performance PLC



# 01



## Excellent performance

The design of ARM +FPGA dual-core processor provides the faster arithmetic speed, more precise motion control and more stable process control.



## Multi-mode Control

Supporting up to 12 channels 200K high-speed pulse output and 8 channels high-speed count, linear interpolation and electronic gear function.



## Widespread application

Since its release, MU200 has been used in 3C industry, packaging industry, hydraulic industry and other industries.

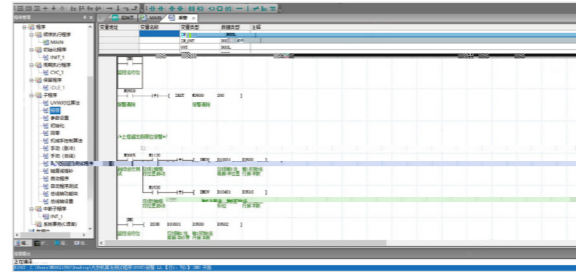




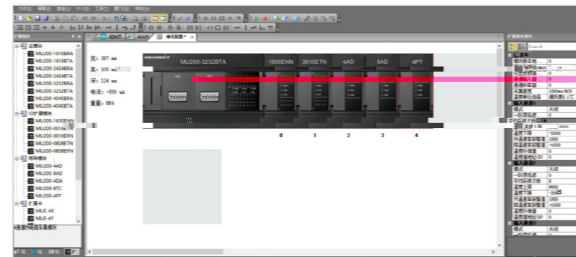
# 04 Simplified programming

Support online modification and incremental compilation to improve compilation efficiency;

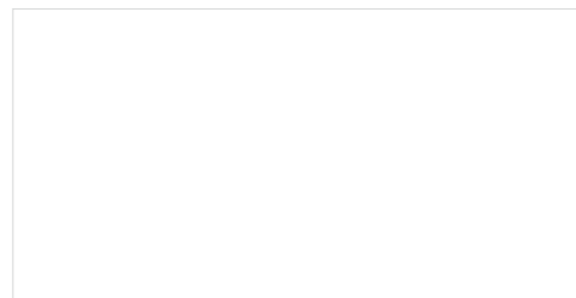
User-program can pinpoint errors for finding and maintenance easily.



The more convenient and intuitive configuration, the more flexible operation.

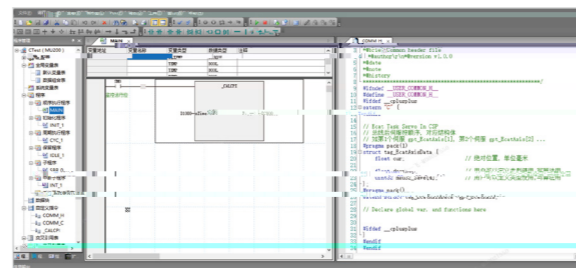


The communication tasks of serial port and Ethernet can be configured through table without invoking complex communication instructions.

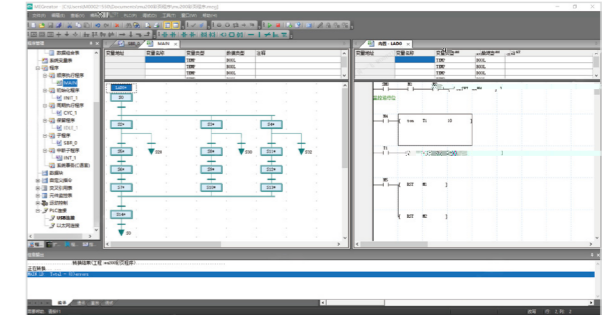


Tabulation communication    Instruction communication

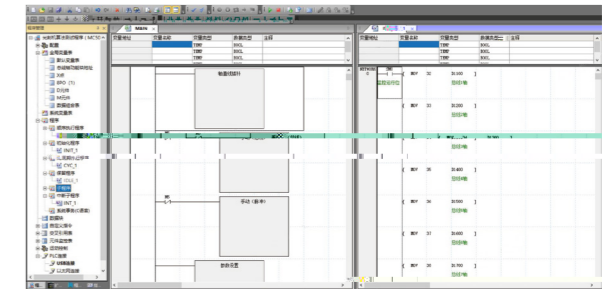
Support C language transaction program and user-defined function instruction.



Support a maximum of 8 main programs, cycle program, initialization program and 255 subroutines at the same time.

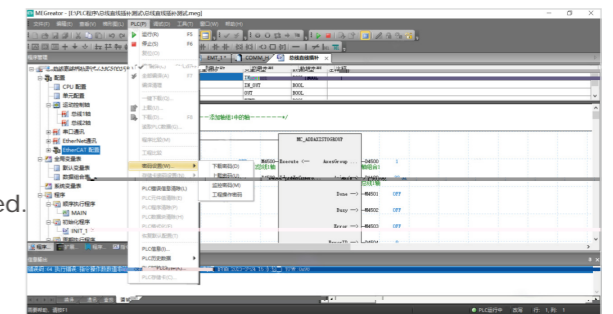


Easy to monitor and search contrastively.



Provide the upload password, download password and monitor password.

The functions of prohibiting formatting and prohibiting upload protect user program security from being cracked.





MU200-1616

MU200-2424

MU200-3232

MU200-4040



MU200



MU200BTA Series



MU200-4040

X0~X1777 Y0~Y1777

30nS

64k

0~8

1~8

0~8

0~256

0~4096

8192

1536

2048

16000

16000

256

256

256

1536



MUE-RS485

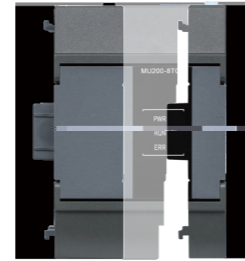
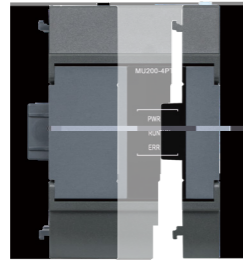
MUE-RS232

1200、2400、4800、9



MU200-4PT

MU200-8TC



4

8

PT100、CU50、CU100、0~300R

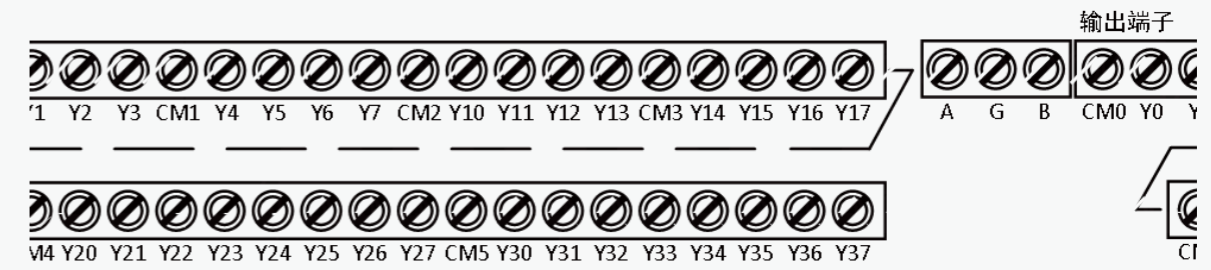
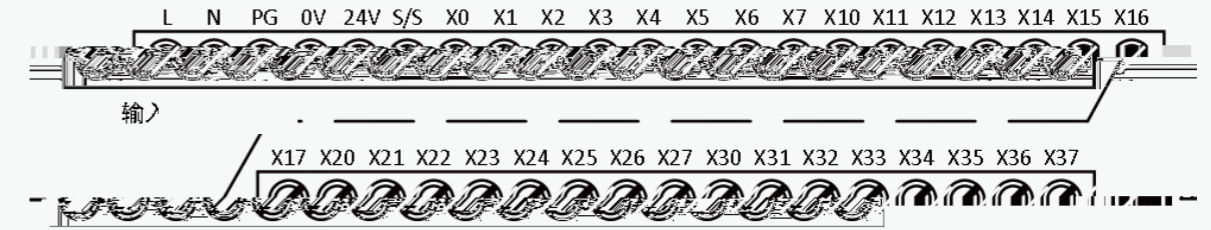
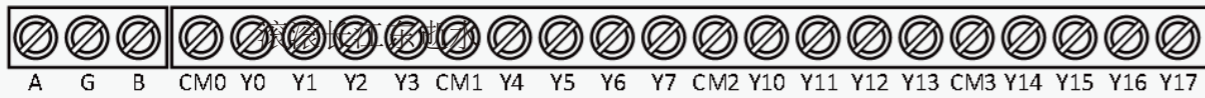
0.1°C

/

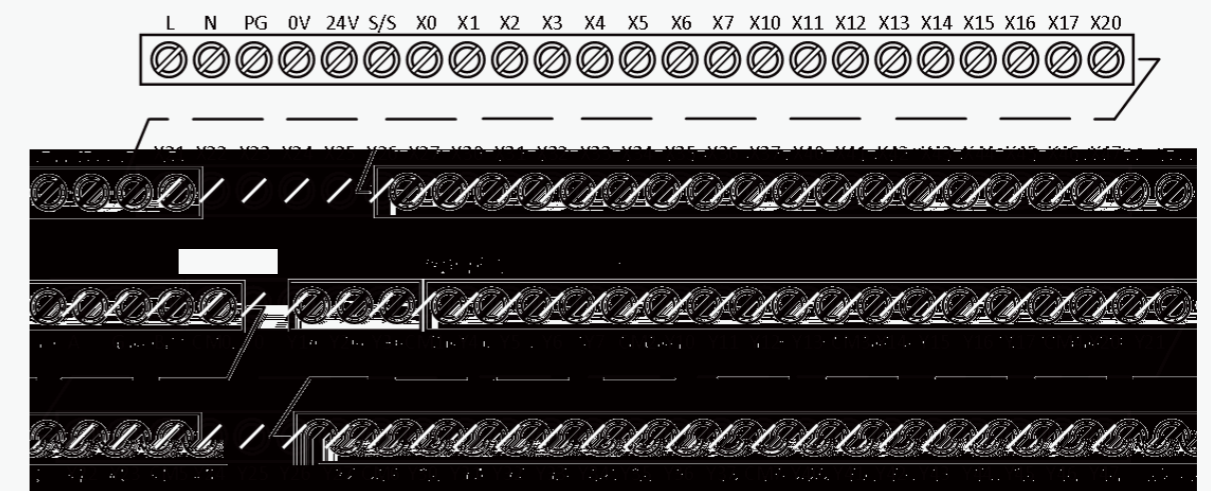
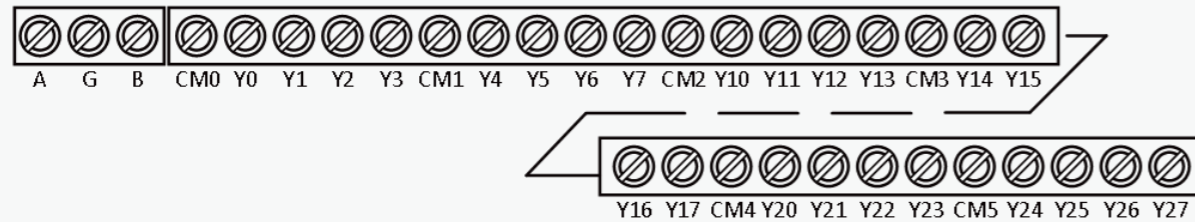
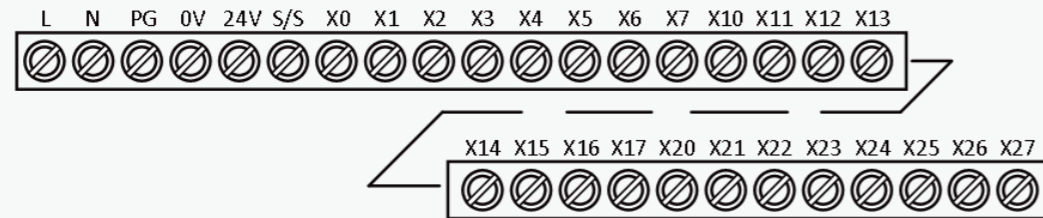
0.1°C

/





**MU200-2424**



CM0 Y00 Y01 Y02 Y03 CM1 Y04 Y05 Y06 Y07



Y15 Y16 Y17 CM2 Y10 Y11 Y12 Y13 CM3 Y14