

- Laser Power
- OA Power
- Flat Panel Power
- Bi-directional Inverters for Portable Power
- Solar & BESS & EV Charging Solution
- LED Power

Industry Automation

- Servo System
- Control System
- Elevator Controller
- Linear Motors
- IOT Solution
- Encoder
- Variable Frequency Drive
- Internal Gear Pump

New Energy Solutions

- Multiplexed EV Charging System(OBC & DC-DC)
- Power Electronic Unit(2-in-1, 3-in-1)
- E-Compressor
- TV EDU
- Motor Control Unit
- Construction Machinery Controller
- Railway A/C Controller
- Railway VFD
- Thermal Mgmt. System

Home Appliance Control Solutions

- Residential A/C Controller
- Commercial A/C Controller
- Heat Pump Controller
- Vehicle A/C Controller
- Solar A/C Controller
- Mini Compressor Controller
- Refrigerator Controller
- Washer/Dryer Controller
- Residential Microwave
- Industrial Microwave
- Smart Bidet
- RF Thawing System

Precision Connection

- FFC
- FPC
- Coaxial Cable
- CCS
- Litz Wire

SHENZHEN MEGMEET ELECTRICAL CO., LTD.

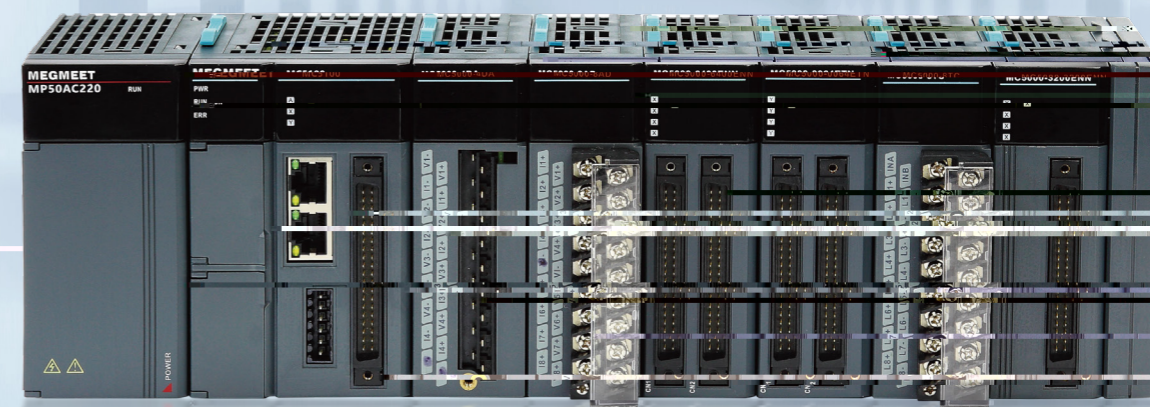
Add 1: 5th Floor, Block B, Unisplendour Information Harbor, Langshan Rd., Science & Technology Park, Nanshan District, Shenzhen, 518057, China

Add 2: 34th Floor, High-tech Zone Union Tower, No.63 Xuefu Road, Nanshan District, Shenzhen, 518057, China

Version: 202405

Megmeet reserves the right to modify the technical parameters and appearance of the products in this catalogue without prior advice to the users.

FOLLOW US



ABOUT MEGMEET

integrating software and hardware R&D, production, sales and services. With more than 20 years of experience, Megmeet has formed core technologies of digital power control, system control and communication, and hardware power conversion. Megmeet sets foot in six core business areas: Industrial Automation, New Energy Transportation, Intelligent Equipment, Power Solutions, Home Appliance Control Solutions, and Precision Connection. Megmeet has established R&D, manufacturing, marketing and service centers worldwide.

As a global professional solution provider in electrical automation, Megmeet consistently embodies the

benchmark for the electrical automation industry.



Steady Performance Growth




 **7300+**
Total Employees

 **2600+**
R&D Staff

 **4:6**
Gender Diversity
Women VS Men

 **1700+**
No. of Patents & IP Rights

 **10**
R&D Centers

 **8**
Manufacturing Bases

Data up to April 2024



C Language

-
-
-

```

int _mc_FUNC (unsigned short a, unsigned short b, unsigned short c)
//Add your code here...
c = a+b;
return PIR_XYZ_OK;
    
```

Motion Control

-
-

轴	名称	分辨率	速度	位置	速度	位置
1	Axis1	12.3	120.000	1.000	1.000	1.000
2	Axis2	12.3	20.000	1.000	1.000	1.000
3	Axis3	1.3	30.000	1.000	1.000	1.000
4	Axis4	1.3	20.000	1.000	1.000	1.000

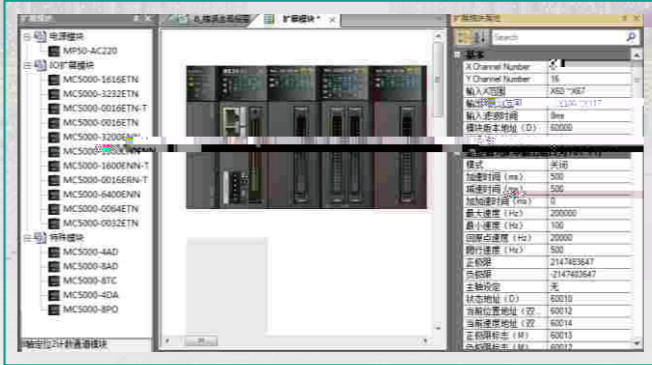


MC5000 Series PLC



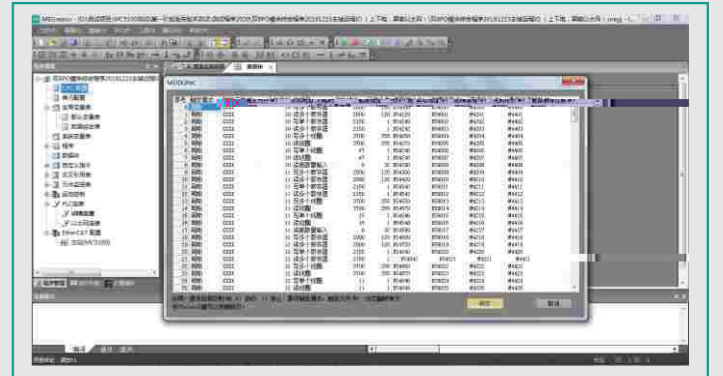
EtherCAT

- Expansion module configuration
- h expansion modules (IO/AD/DA/TC/PO.....)



Convenient Communication

-



M6 Series Servo

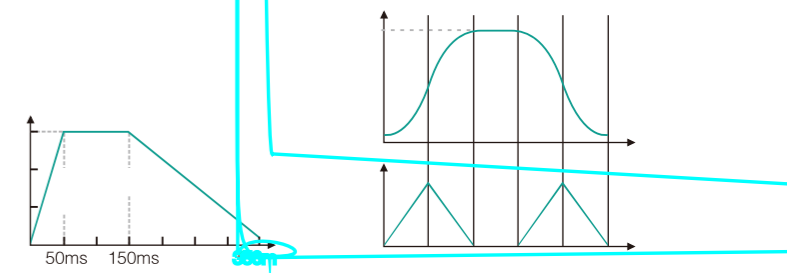
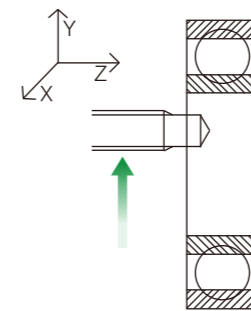
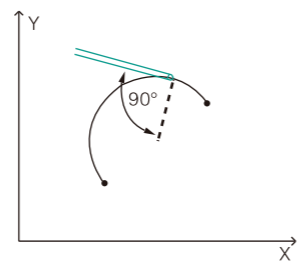


MC5000S-ET Expansion Rack

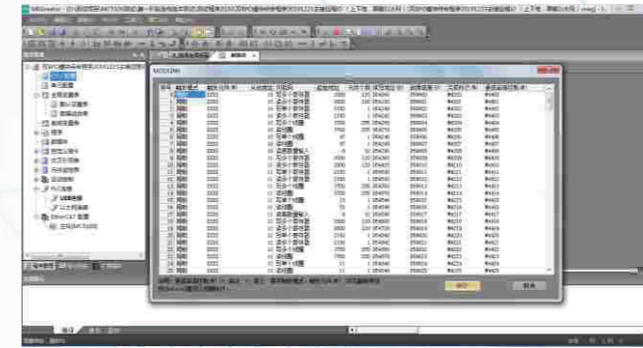
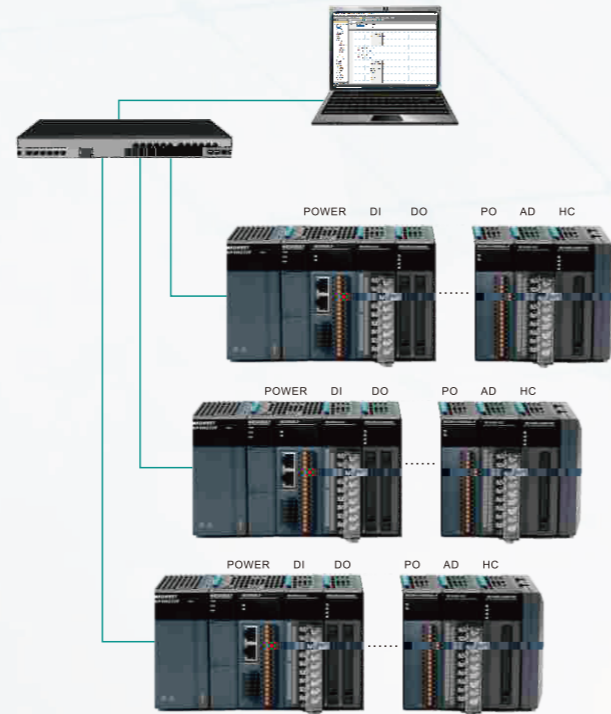
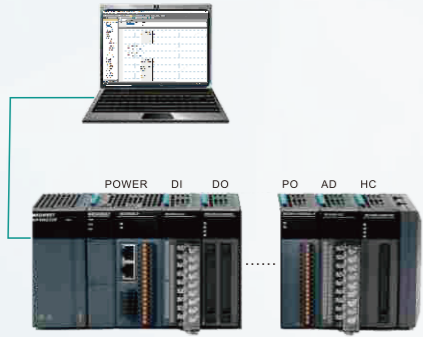


M6 Series Servo

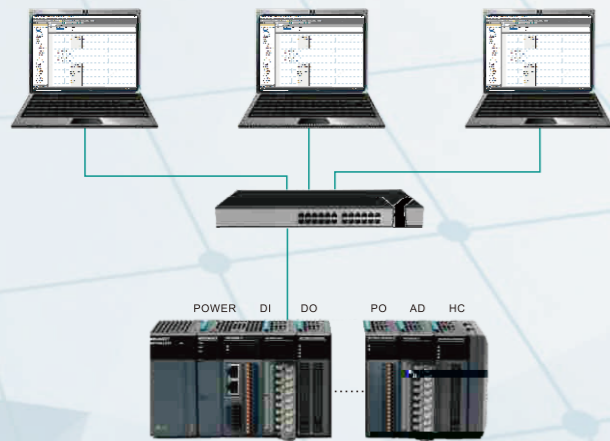
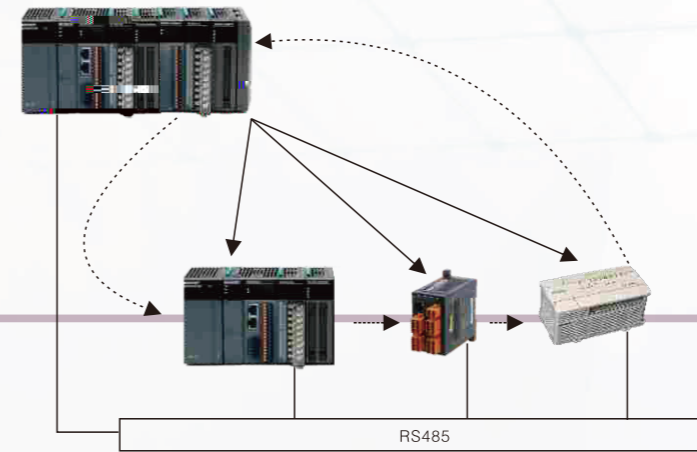




Convenient and Easy-for-use USB Port



*



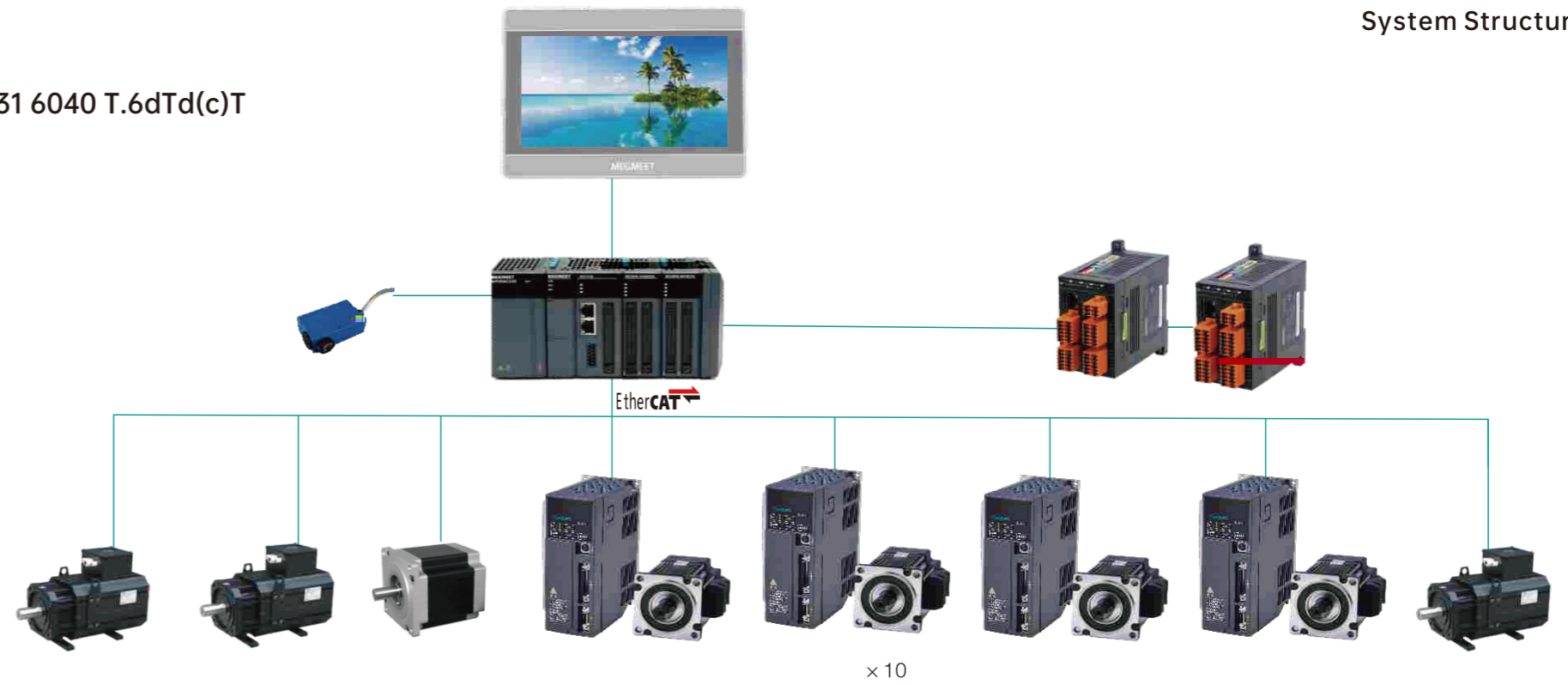
*

Application of Mini

MC5000EB64 T.6dTd(c)T

System Structure

tj 50te ur



Application of MC5000EB64 in Wire Drawing Machine

System Structure

